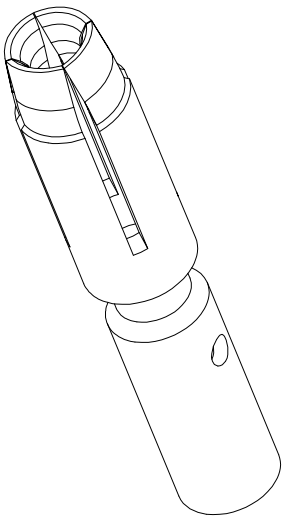
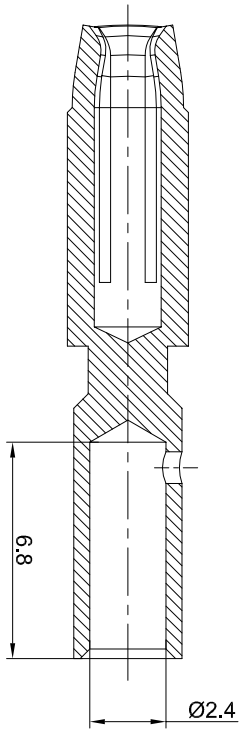
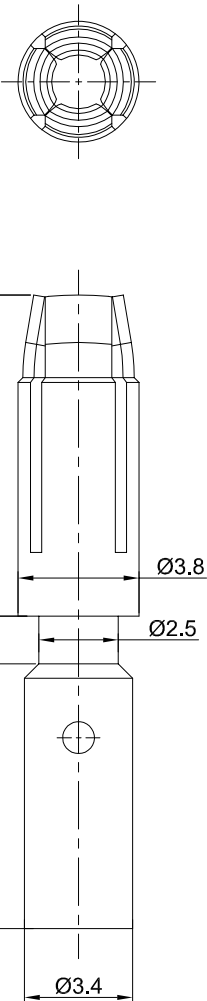


REVISIONS				
REV	ECO	DESCRIPTION	DATE	BY APPR
B1	-	RELEASE NEW DWG FORMAT	May:12,2015	DRACK TOMMY
B2	-	UPDATE THE RATED CURRENT	Mar:30,2016	DRACK TOMMY
B3	-	UPDATE THE CRIMP RANGE	Jul,10,2017	White TOMMY



NOTES: UNLESS OTHERWISE SPECIFIED

1. MATERIAL: COPPER ALLOY, GOLD PLATED
2. SPECIFICATIONS:
 - 2.1 RATED CURRENT: 30 AMPS
 - 2.2 CONTACT RESISTANCE: <3 milliohm
 - 2.3 AVAILABLE WIRE RANGE: 14AWG~20AWG
 - 2.4 ROHS COMPLIANT
3. ALL DIMENSIONS ARE FOR REFERENCE USE ONLY.

QUANTITY	SEE PART NUMBER CHART	PART NUMBER	DESCRIPTION	ITEM
			Amphenol	
UNLESS OTHERWISE SPECIFIED 1) All dimensions are in millimeters. 2) Tolerances are as follows: 1 Pt. DEC 20-30 Fractions .1754 3 Pt. DEC 20-98 Angles .1° 3) Note reference =				
PROCESS SPECIFICATIONS: MATERIAL SPECIFICATIONS: CUSTOMER: Socket contact:2.0mm Crimp 14~20AWG THIS DRAWING IS SUPPLIED FOR INFORMATION ONLY. SPECIFICATIONS AND PERFORMANCE DATA ARE THE PROPERTY OF AMPHENOL CORPORATION. NO PARTS OR REPRODUCTION ARE ALLOWED. ALL MANUFACTURING VARIATIONS.				
SIGNATURES		DATE	SCALE: NONE	
DRAWN:	DATE: Jul,10,2017	SIZE: B	TYPE: C-	DWG NO: SC000260
CHECKED:	ENGINEER:	APPROVAL:	SHEET: 1	OF: 1
SHEET 1 OF 1 REV: B3 DWG NO: SC000260 TITLE: Socket contact,14# Crimp 14-18AWG				