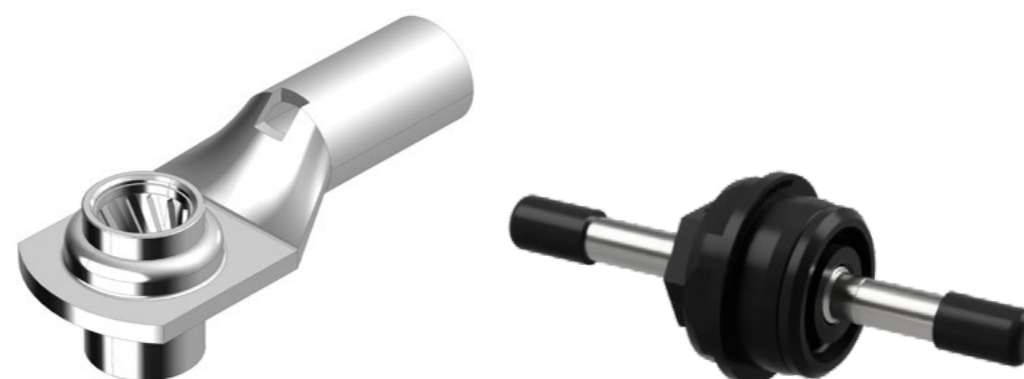


# ACTIVE PINLOCK 1.000 VOLT - KEY FEATURES AND PRODUCT SPECIFICATION

The GroundMate series is a interconnection system with 1.000 Volt Active Pinlock as universal use in various power applications.

Active Pinlock specially designed for grounding or potential equalisation.



SERIES	KIT DESCRIPTION	CONTACT SIZE	WIRE GAUGE	CABLE DIAMETER	RATED CURRENT
GroundMate	C360 G54 041 G2	8 mm RADSOK	25 mm <sup>2</sup>	max. 10,5 mm	135 A
GroundMate	C360 G53 041 G2	8 mm RADSOK	16 mm <sup>2</sup>	max. 10,5 mm	115 A

Criteria	APL 1.000 Volt
Temperature Range	-40 to +125 °C
IP-Rating	IP20
Voltage Rating	1.000 V AC/DC
Overvoltage category	III
Mating cycles	min. 100
Polution Degree	3

## KEY FEATURES:

- quick and easy installation saves time and installation effort
- standard bolt or thread (for grounding)
- no torque control necessary
- optical and haptic feedback
- axial assembly (e.g. in line) possible
- assembly with crimping tool
- vibration-proof solution



Contact us for product related information:  
+49 7131 929 0  
industrial@amphenol.de

Please note that we can offer all cable connectors as cable assemblies according your specific requirements

- With all typical cables known to the market. We are pleased to share suggestions.
- Specific B-side, also non-Amphenol content.
- Splitters – also overmoulded.
- Typical accessories like clips, tape, conduits, etc.

