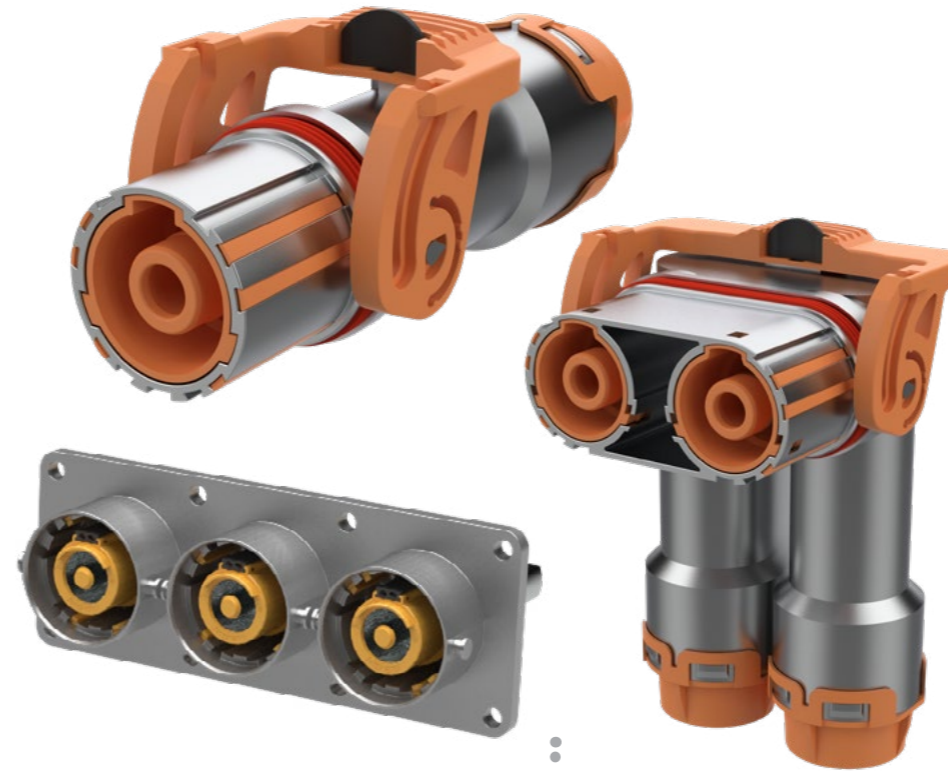


POWERMATE - KEY FEATURES AND PRODUCT SPECIFICATION

The PowerMate series is a high voltage interconnection system for various applications on the propulsion system of Battery Electric Commercial Vehicles, for example inverter, motor or battery.

PowerMate is specifically designed for harsh environments.

| SERIES | CONTACT SIZE | Poles | WIRE GAUGE | RATED CURRENT |
|---------------|--------------|------------|---------------------|---------------|
| PowerMate 500 | 14 mm RADSOK | 1,2,3 ways | 70 mm ² | 380 A |
| | | 1,2,3 ways | 95 mm ² | 415 A |
| | | 1,2,3 ways | 120 mm ² | 470 A |
| | | 1,2,3 ways | 150 mm ² | 515 A |
| PowerMate 300 | 8 mm RADSOK | 1,2,3 ways | 16 mm ² | 148 A |
| | | 1,2,3 ways | 25 mm ² | 180 A |
| | | 1,2,3 ways | 35 mm ² | 215 A |
| | | 1,2,3 ways | 50 mm ² | 255 A |
| | | 1,2,3 ways | 70 mm ² | 300 A |



| Criteria | PowerMate |
|----------------------|----------------------------------|
| Temperature Range | -40 to 125 °C |
| IP-Rating | IP6K7, IP6K9K mated |
| Touchproof | IPXXB mated/unmated, IPXXD mated |
| Voltage Rating | up to 1500 V DC |
| HVIL | yes |
| Mating cycles | 60 cycles |
| Corrosion resistance | +600 h (LV) |
| CPA | yes |
| General validation | according LV 215, ISO 16750-3 |

KEY FEATURES:

- Very small mounting height
- Assembly with crimp tools
- Validation according EMEA Automotive standards
- Vibration resistant design and validation
- 16-150 mm² wire gauge in only two frame sizes
- Short lead-time due to modular and variable design
- Manufactured in European Union



Contact us for product related information:
+49 7131 929 0
industrial@amphenol.de

Please note that we can offer all cable connectors as cable assemblies according your specific requirements

- With all typical cables known to the market. We are pleased to share suggestions.
- Specific B-side, also non-Amphenol content.
- Splitters – also overmoulded.
- Typical accessories like clips, tape, conduits, etc.

