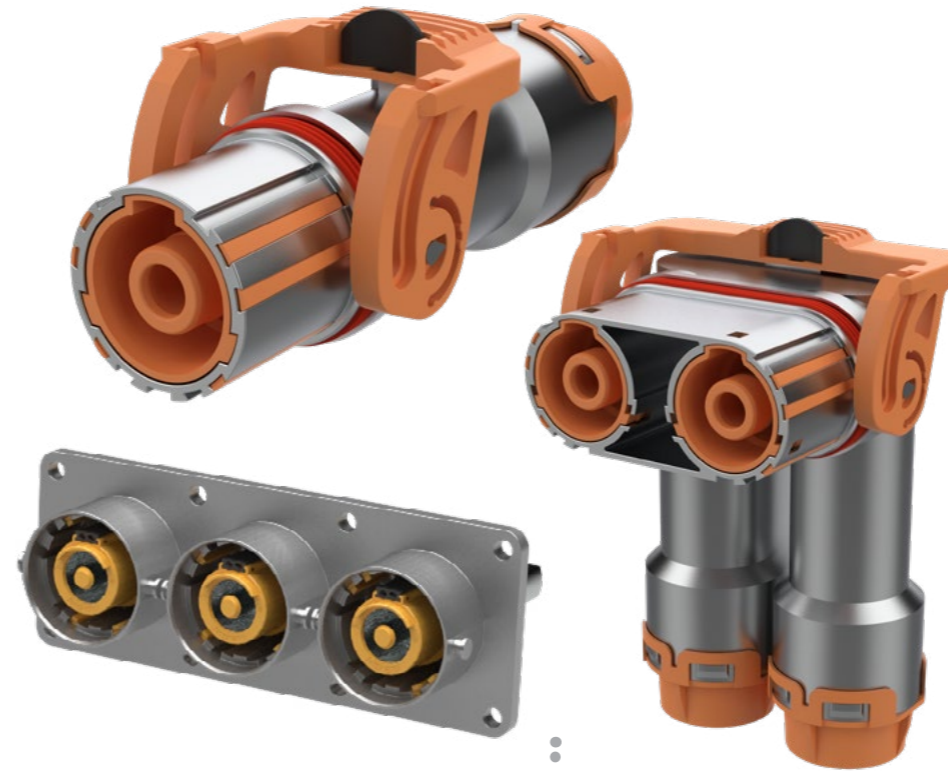


POWERMATE - KEY FEATURES AND PRODUCT SPECIFICATION

The PowerMate series is a high voltage interconnection system for various applications on the propulsion system of Battery Electric Commercial Vehicles, for example inverter, motor or battery.

PowerMate is specifically designed for harsh environments.

SERIES	CONTACT SIZE	Poles	WIRE GAUGE	RATED CURRENT
PowerMate 500	14 mm RADSOK	1,2,3 ways	70 mm ²	380 A
		1,2,3 ways	95 mm ²	415 A
		1,2,3 ways	120 mm ²	470 A
		1,2,3 ways	150 mm ²	515 A
PowerMate 300	8 mm RADSOK	1,2,3 ways	16 mm ²	148 A
		1,2,3 ways	25 mm ²	180 A
		1,2,3 ways	35 mm ²	215 A
		1,2,3 ways	50 mm ²	255 A
		1,2,3 ways	70 mm ²	300 A



Criteria	PowerMate
Temperature Range	-40 to 125 °C
IP-Rating	IP6K7, IP6K9K mated
Touchproof	IPXXB mated/unmated, IPXXD mated
Voltage Rating	up to 1500 V DC
HVIL	yes
Mating cycles	60 cycles
Corrosion resistance	+600 h (LV)
CPA	Yes
General validation	according LV 215, ISO 16750/3-7&9

KEY FEATURES:

- Very small mounting height
- Assembly with crimp tools
- Validation according EMEA Automotive standards
- Vibration resistant design and validation
- 16-150mm² wire gauge in only two frame sizes
- Short lead-time due to modular and variable design
- Manufactured in European Union



Contact us for product related information:
+49 7131 929 0
industrial@amphenol.de

Please note that we can offer all cable connectors as cable assemblies according your specific requirements

- With all typical cables known to the market. We are pleased to share suggestions.
- Specific B-side, also non-Amphenol content.
- Splitters – also overmoulded.
- Typical accessories like clips, tape, conduits, etc.

